

# Re-Synchronizing ILookPI System Database Objects – How to detach a Database for Rebuilding

The purpose of this memorandum is to show you how to detach a disconnected database, should that happen during your ILookPI work with SqlServer 2008. It can happen, although very infrequently, but it is not at all difficult to let the system correct its own settings and reset the databases. You just have to notify it to take that action - either remotely or manually. This is the manual visual cue form of dropping tables from a database for a relink.

The first indication of this problem is within PI itself, when the log windows would normally reveal this error in **RED** as follows :

```
20-Sept-2008 18:53:06 Welcome to ILook PI @ v1.0.0. New session started
20-Sept-2008 18:53:06 MachineID 'RL-PC'. Logged on User 'RL-PC\RL'.
20-Sept-2008 18:53:07 Successfully opened 'SQL Server' connection to control Db
'C:\Users\RL\Documents\ILookPI\Application\ILookControl.mdf'.
20-Sept-2008 18:53:07 Successfully opened 'SQL Server' connection to hash set Db
'C:\Users\RL\Documents\ILookPI\HashDb\HashSetStore.mdf'.
20-Sept-2008 18:53:07 Object permanent deletion after elimination is set to 'False'.
20-Sept-2008 18:54:08 Successfully deleted case 'Ch1'.
20-Sept-2008 18:54:12 Working in case Set-up Wizard.
20-Sept-2008 18:54:32 Adding new case 'One'.
20-Sept-2008 18:54:32 Failed to open SQL Server connection to case Db 'c:\cpts\1\ILookCase.mdf', please shutdown ILook and
check your Rdbms installation.
20-Sept-2008 18:54:32 Failed to open 'SQL Server' connection to object hash Db 'c:\cpts\1\ILookHash.mdf', please shutdown ILook
and check your Rdbms installation.
20-Sept-2008 18:54:32 Successfully opened case 'One'.
20-Sept-2008 18:54:32 Failed to load case category definitions from case Db.
20-Sept-2008 18:54:32 Failed to open case 'One'.
20-Sept-2008 18:54:32 Successfully added new case 'One'.
20-Sept-2008 18:54:32 Finished working in Case Set-up Wizard.
20-Sept-2008 18:55:42 Working in media Set-up Wizard.
20-Sept-2008 18:55:42 Failed to read ProcessingGroup table in Control.
```

This is not the only indication, but it will be the predominate one, if it occurs at all, where the case control Databases need to be re-synchronized.

## In summary :

You will start management studio.  
You will then connect to the Local IlookPI database in use (you may have multiple instances).  
You will Start ILookPI and refresh Management Studio. Then take the Databases (2 of them in use out of 4 used by PI) offline, and then detach them.  
You will shut down the Management Studio and ILookPI, then restart IlookPI. The Database engine will rebuild the system tables automatically.

The objective is to realign the install of Sqlservers system tables to correspond to ILooks system installation. SqlServer itself uses its own tables to record applications on the computers which utilize it. The connection between those applications (ILookPI for one) can be disrupted because of unforeseen events, such as a user 's actions inside the management studio or deleted control folders for the ILookPI installation while it is running, or if a drive becomes corrupt. When this happens, it is easy to repair it from Management studio in SqlServer 2008 – just go to the START

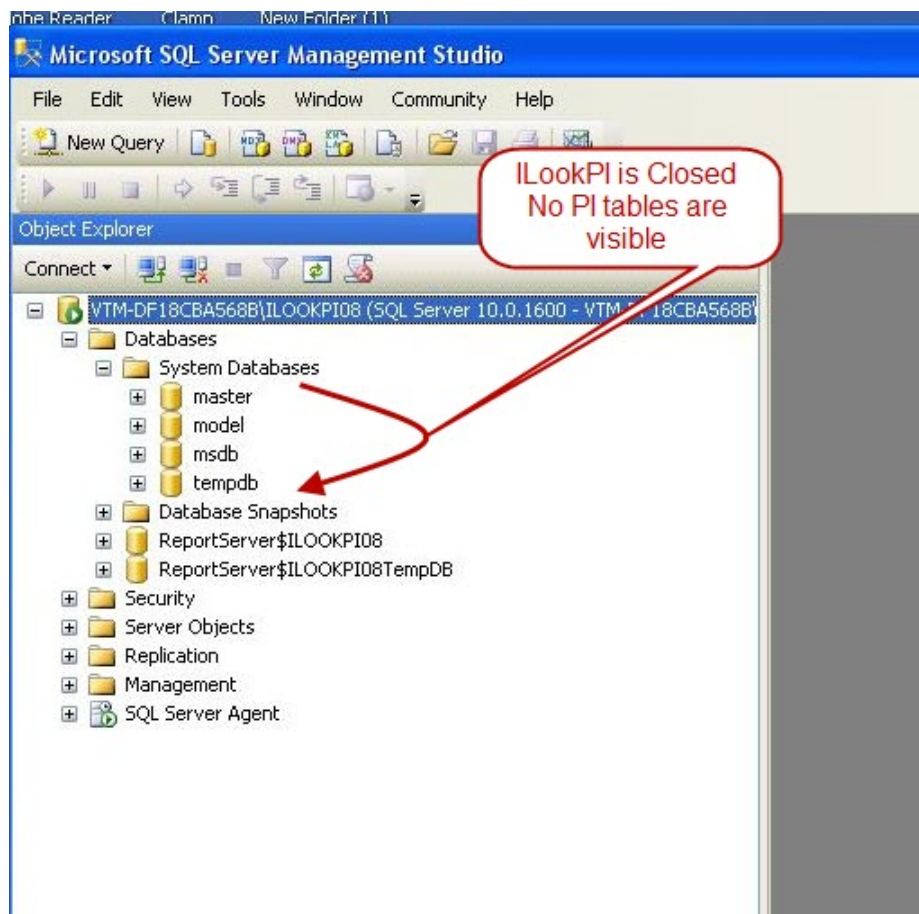
programs group by following these screens and instructions on how to use Management Studio to do the reset.

(1)Begin by cold booting the computer and NOT starting ILookPI. First start management Studio for SqlServer 2008.

In the following screen, you see a view of opening Management Studio for SqlServer 2008 and connecting to the Database itself that is used for ILookPI 's full installation of 08 server, in this case, named, ILOOKPI08. If you are running another server instance name or SqlServerexpress 2008 version, the name may be different, but pick the INSTANCE name your using in PI to connect to (Visible in SETUP options). Your connection box, when you start Management studio, should list the INSTANCE NAME of the SqlServer that Server 08 uses to name your installation of ILookPI. If it does not, use the dropdown box to find that instancename and select it.

When selected, Click the CONNECT button, when the name in the Server connection box aligns to the INSTANCE NAME in use for ILookPI on your machine. The green icon on the left top control line of this first screen, shows that the database has been connected to management studio.

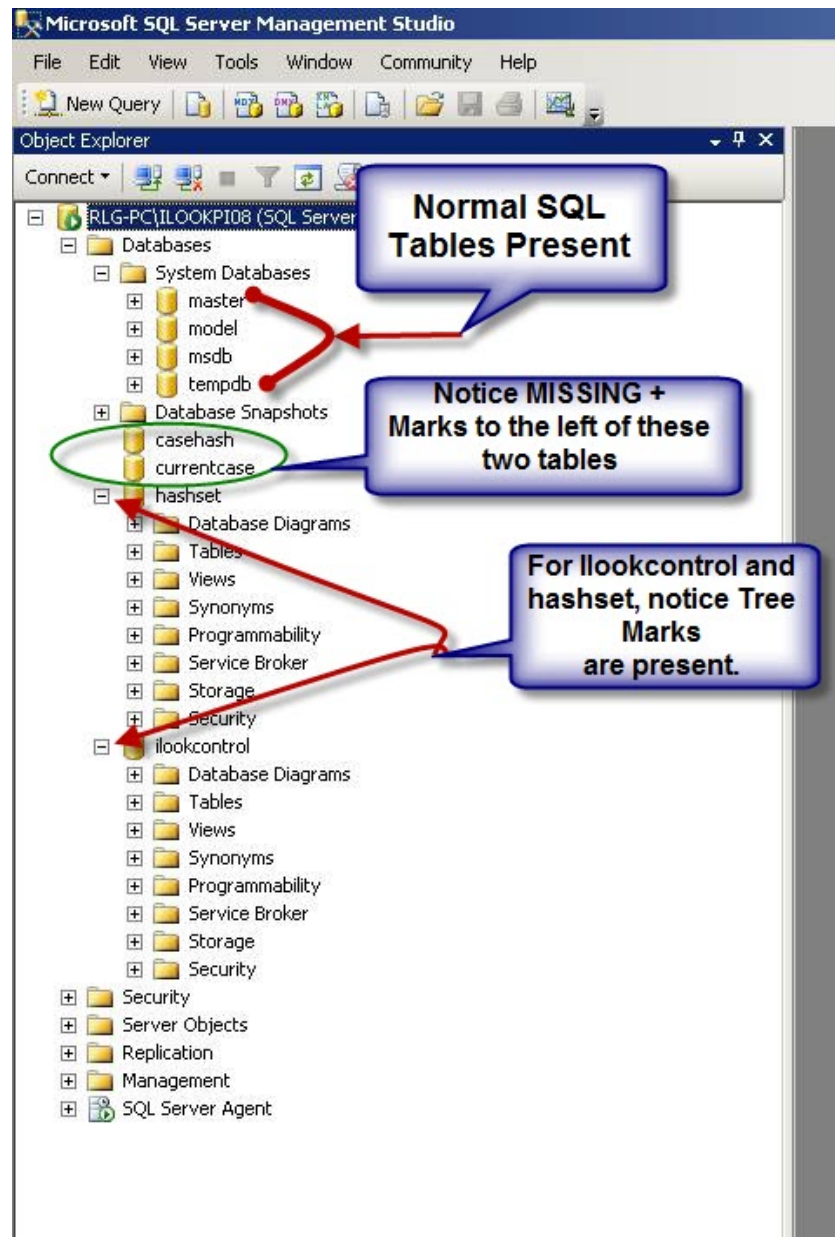
In this view, no ILookPI application databases are visible because the application is not instantiated and it has not connected to the database engine itself. Below ,you see 4 system database tables which are the only ones loaded by default when you connect to ILookPI08. This is the view without ILookPI the application, actually running.



You diagnose this entire issue by visual Examination of the following screen and comparing it to the screen in your own installation -----after -----STARTING ILookPI

(2) So start PI, but do not open a case, and compare to the following screen of Management studio – while PI is running.

Notice in this next screen there is no “+” mark next to two of the tables that are visible. There may also be a case where there are two visible + marks (Do view -REFRESH after starting PI)

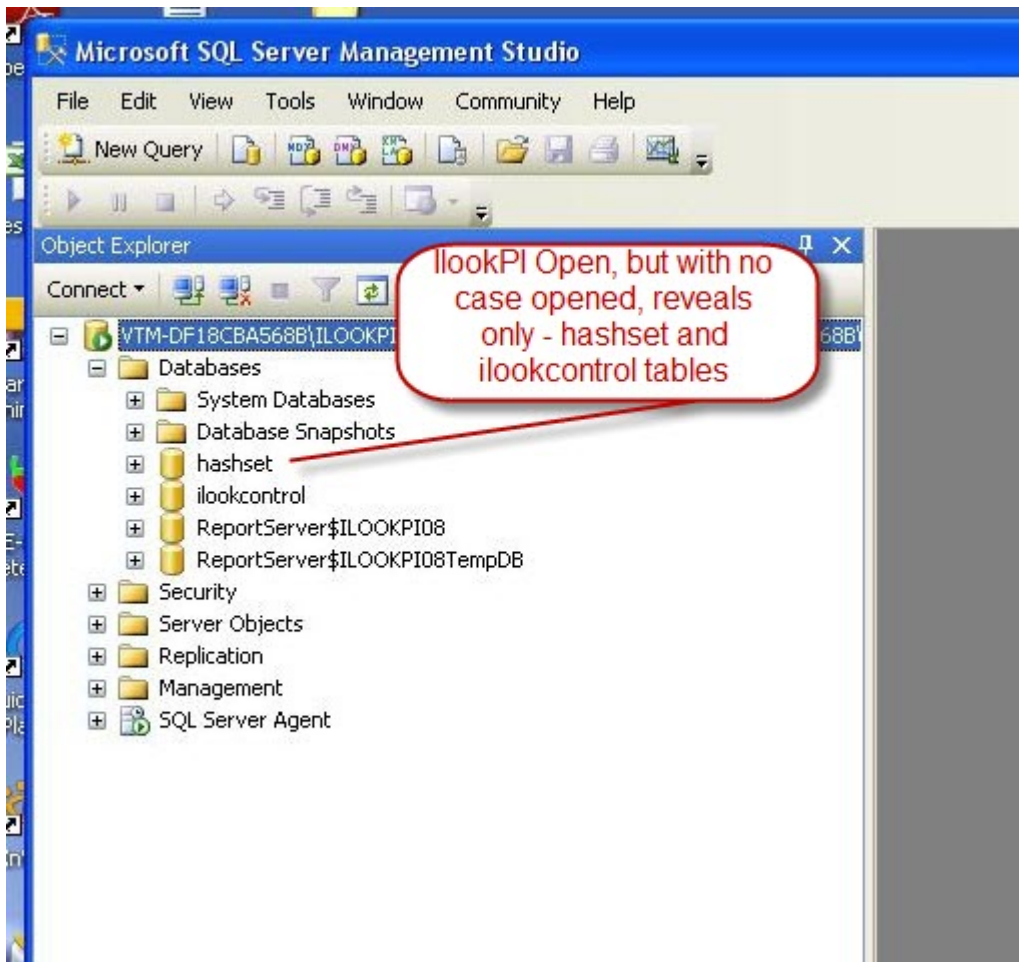


Even if you see expansion + marks next to the tree controls for all 4 ILookPI databases, you may still have a problem which this may fix regardless. Since this same solution solves more than one problem, we will continue, assuming the ILook specific tables (currentcase and casehash) are visible but have no “+” marks beside them.

In the below screen, you can see the difference in what Management Studio sees inside the Instance Named "IlookPI08" when the application IlookPI is opened. In other words, if you simply execute IlookPI and PI is in running, but NO CASES are loaded, then you will see two tables loaded that are specific to the running of IlookPI.

- a. Hashset is the first table
- b. Ilookcontrol is the second table

No other tables will be in view, unless a case is opened inside the IlookPI application.



In the below screen, ILOOKPI has been started.

You will notice there are now 4 tables that are opened, with the two in yellow -- being new to opening a case.

- a. Casehash
- b. Currentcase
- c. Hashset

d. Ilookcontrol

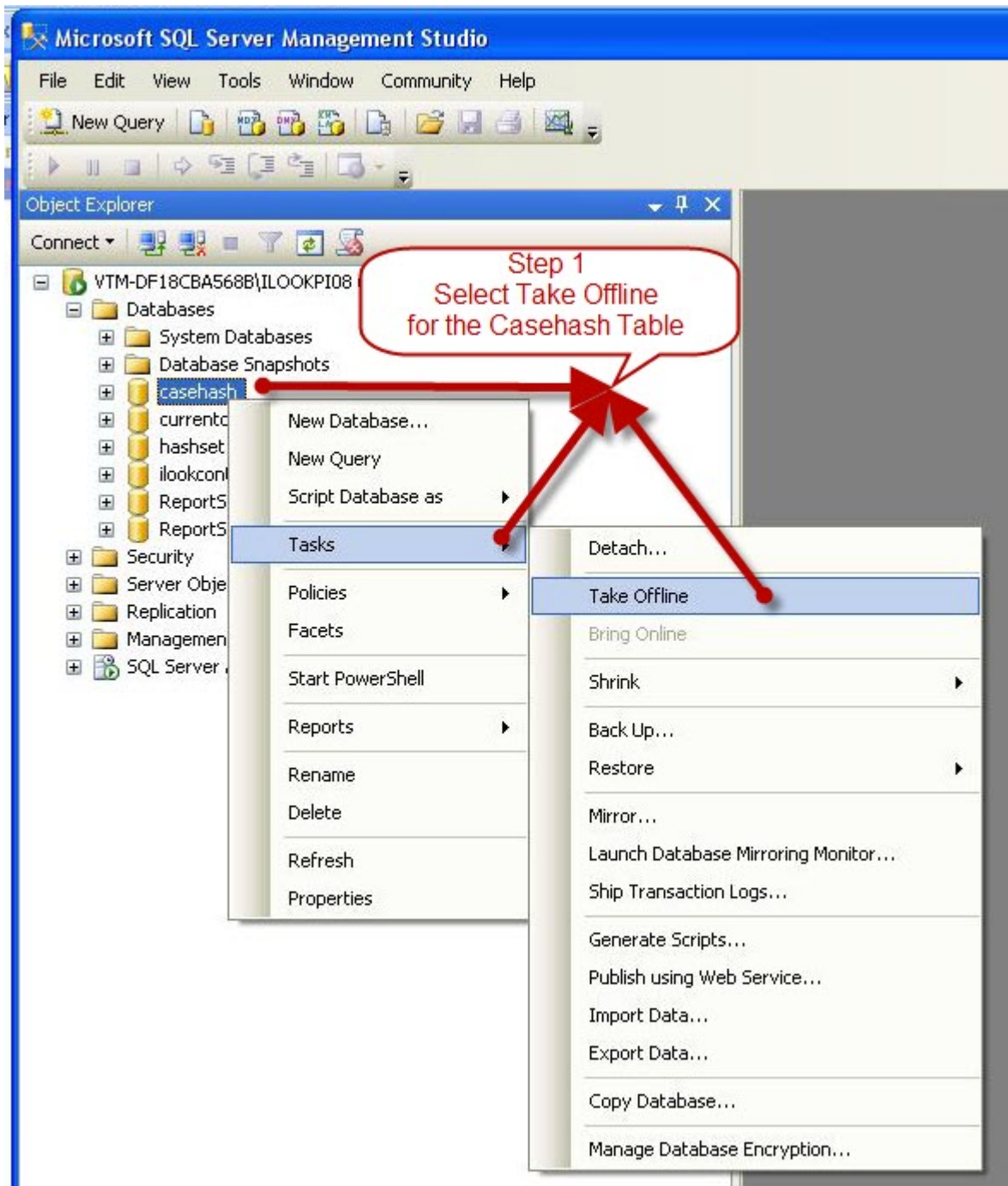
The first two tables in yellow, only exist when a CASE has been opened inside the application ILOOKPI, not just when PI is started, but when you have done an OPEN case menu selection.

It is these two in yellow that must be addressed if there are failures to open the database engine when you attempt to open a case in ILookPI and the log system returns an error as noted at the first of this paper.

You will complete only two steps, both of which are visible in the screen below.

Step 1. Select **Casehash** and right click Tasks, select **Take offline**

Step 2. Repeat this process for the **Currentcase** listed item, then click Tasks, select **Take Offline**.



Your ready to now DETACH the tables just taken offline.

Step 3 : You now repeat the above screen TASK options by executing the right click option "Detach".

Repeat the process above for both steps 1 and 2, but select CURRENTCASE Detach, instead of Take offline

Step 4 : When you select DETACH, you will have to check a box for DROP CONNECTIONS.

This is the screenshot below.

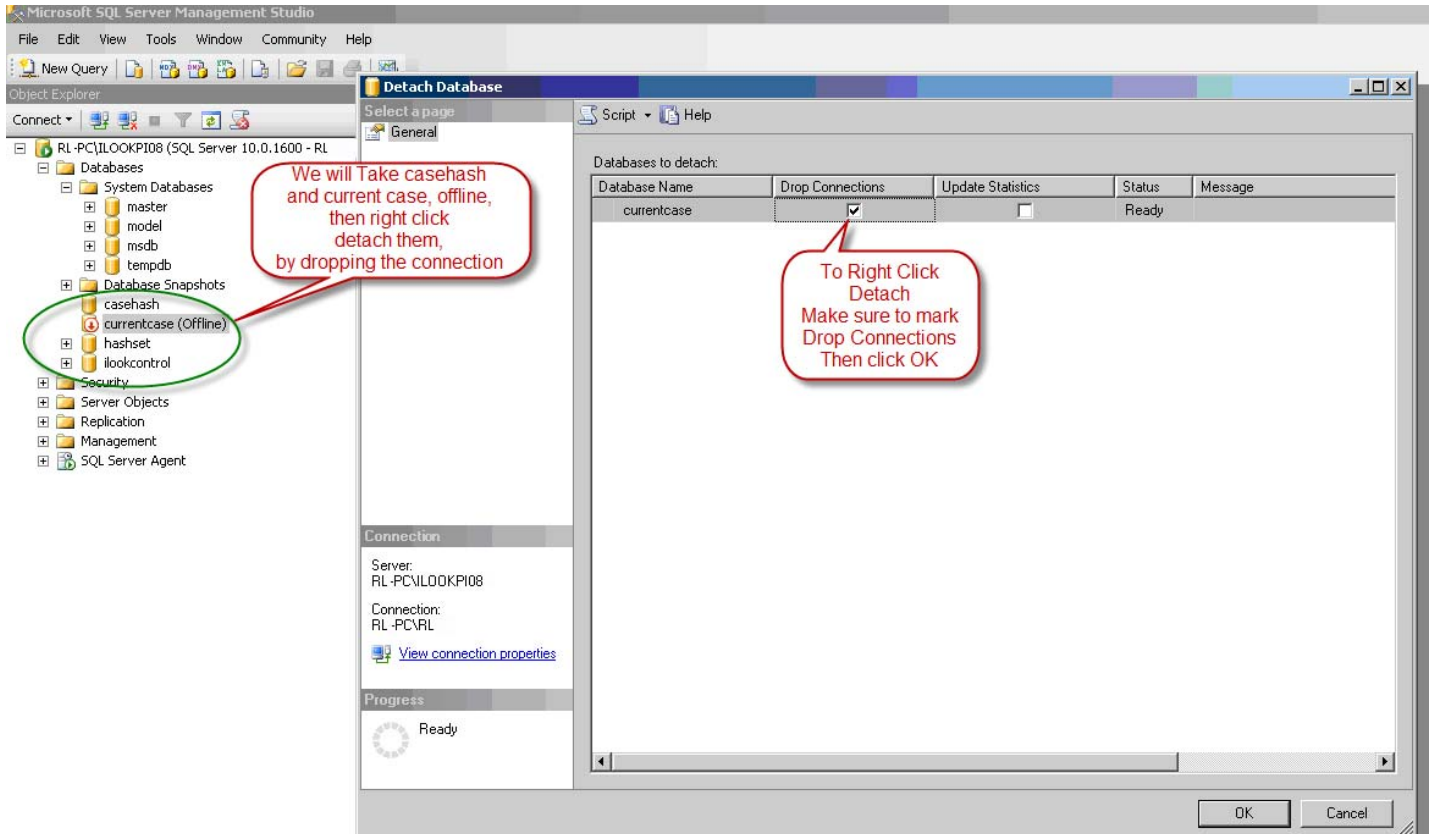
After checking that box, and pressing ok, you can stop ILookPI. Management studio will still be running at this time.

Stop Management Studio.

Reboot the computer.

Restart ILookPI

IlookPI should now have reconnected to the table objects and synchronized itself to the objects.



The END.

Copyright 2009 @ Perlustro LP